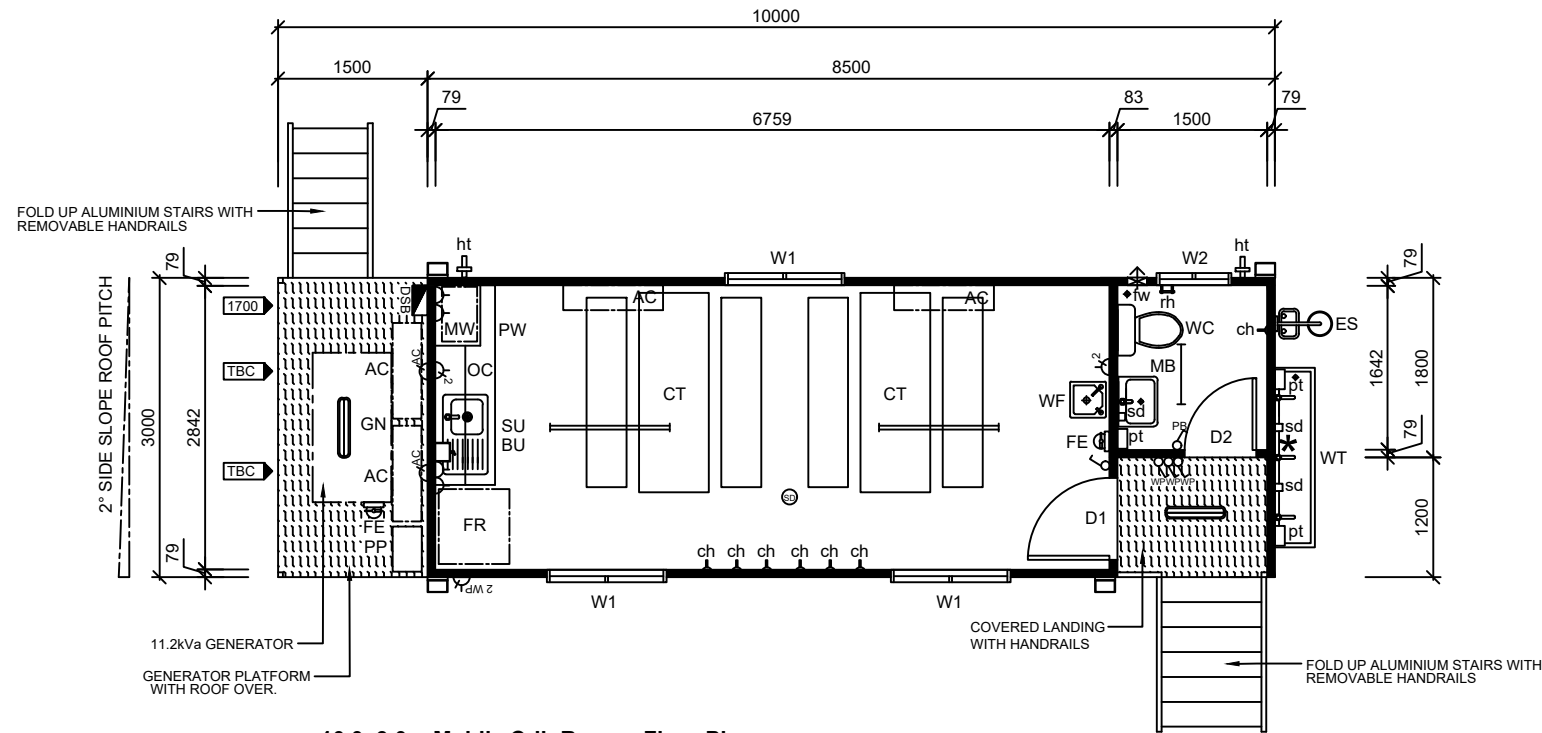
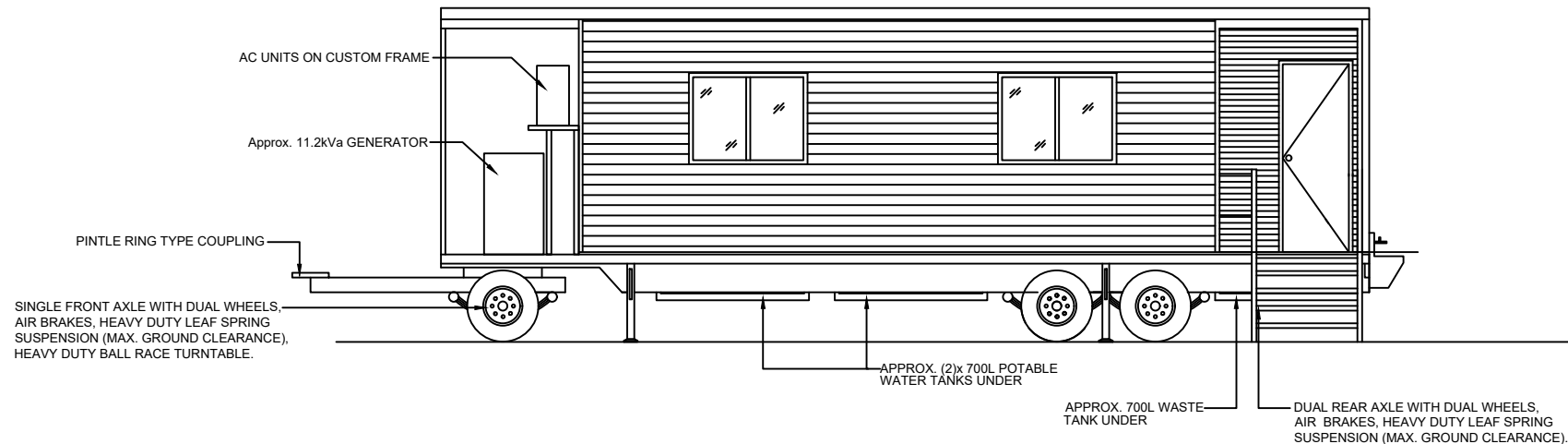


PRELIMINARY DRAWING



10.0x3.0m Mobile Crib Room - Floor Plan

Scale 1:75



10.0x3.0m Mobile Crib Room - Front Elevation

Scale 1:75

Colour Schedule

External		
Cladding	-	Surfmist
Roof	-	Zincalume
Flashings	-	Surfmist
Capping	-	Surfmist
Door	-	White
Windows	-	White
Handrails	-	Safety Yellow

Internal		
Vinyl (R10)	-	Grey
Walls	-	Grey
Ceiling	-	White
Cabinetry	-	White

Item List

Item	Qty	Description
D1	x(1)	2040x820mm External Metal Clad Door With Glass Viewing Panel - Grey Glass & Door Closer.
D2	x(1)	2040x720mm External Metal Clad Door With Door Closer.
W1	x(3)	900x1200mm Sliding Glass Window - Grey Glass With Flyscreen & Internal Holland Blind.
W2	x(1)	300x750mm Obscure Glass Vented Window With Flyscreen.
AC	x(2)	3.5kw Mitsubishi Heavy Industries Reverse Cycle Split System Reverse Cycle Air Conditioner. External Units Mounted On Custom Air Conditioner Mounting Frame.
GN	x(1)	11.2kVa Kubota Mine Spec Diesel Generator With Custom 285L Bunded Diesel Tank.
SU	x(1)	2000mm Bench Top & Splashback, Lockable Cupboards & Single Drawer Under, Single Bowl Single Drainer (Cold Only)
OC	x(1)	1400mm Overhead Cupboards With Lockable Doors.
BU	x(1)	3.0L Boiling Water Unit - Wall Mounted.
FR	x(1)	Approx. 400L All Fridge.
MW	x(1)	Approx. 27L Microwave On Custom Shelf Over Pie Warmer.
PW	x(1)	Pie Warmer (Approx. 50 Pie Capacity).
CT	x(2)	Crib Table With Fold Up Bench Seats.
FE	x(1)	Fire Extinguisher & Sign.
WC	x(1)	Toilet Pan With Dual Flush Cistern.
MB	x(1)	Stainless Steel Hand Basin - Cold Only, Mirror Over.
WT	x(1)	1800mm Stainless Steel Wash Trough With 3 Taps (Cold).
ES	x(1)	Emergency Shower / Eye Wash Station.
WF	x(1)	Zip Stainless Steel Economaster Chilled Water Fountain.
PP	x(1)	Water Pressure Pump.

Item List (Cont.)

Item	Qty	Description
HT	x(2)	External Hose Tap.
pt	x(3)	Paper Towel Dispenser.
sd	x(3)	Soap Dispenser.
ch	x(13)	Coat Hook (*2x Rows Of 6 Hooks, + 1x Single Hooks).
rh	x(1)	Roll Holder.
fw	x(1)	Floor Waste.

Notes

- 75mm Steel Frame Construction.
- 19mm F11 T&G Plywood Flooring.
- Coved Commercial 2mm R10 Vinyl Floor Covering In Crib Room Area & Wet Area.
- Pre-finished Plywood Internal Walls & Ceiling Lining.
- Approx. (2)x 700 Ltr Potable Water Tank With Chemlock Fitting For Fill Point, Mounted Within Trailer Frame (*Bottom Flush With Frame).
- Approx. 700 Ltr Waste Tank, Mounted Within Trailer Frame With Chemlock Fitting For Pump Out (*Bottom Flush With Frame).
- Grey Water From Sink, Hand Basins To Run Off Hose At Rear Of Building (*Approx. 20m Hose For Grey Water).
- Unregistered Trailer With Maximum Trailer Towing Speed of 20km Per Hour. Trailer Designed To Be Used On Mine Sites / Construction Sites Only. Mudguards Fitted Above Wheels.
- Trailer Fitted With A Yard Release System On The Air Brakes.
- Trailer Also Fitted With Spare Tyre.

Electrical Legend

Icon	Qty	Description
⊞	x(1)	Metal External Distribution Switchboard (Lockable) With Double Pole Main Switch, Double Pole Circuit Breakers Fitted With Cirlock Metal Lockouts & Injection Test Kit.
⊞	x(1)	Light Switch
⊞	x(1)	Push Button Time Delayed Light Switch
⊞	x(3)	Weatherproof Light Switch
⊞	x(4)	10amp Single GPO
⊞	x(2)	10amp Double GPO
⊞	x(2)	10amp Double Weatherproof GPO
⊞	x(2)	External Isolator Switch - Split AC
⊞	x(1)	600mm LED Weatherproof Light Fitting
⊞	x(3)	1200mm LED Batten Light Fitting
⊞	x(2)	600mm LED External Light Fitting
⊞	x(1)	Smoke Detector
⊞	x(4)	100w LED Flood Light - Wall Mounted.
⊞	x(1)	Flashing Amber Beacon

CLIENT APPROVAL

Signature:		Date:	
Rev.	Description	Date	By
A	Issued for Client Review	30/11/20	BW



THIS DRAWING AND DESIGN IS THE SOLE PROPERTY OF JABEGIL PTY LTD T/A MULTITRADE BUILDING HIRE A.B.N. 36 010 138 600 IT MAY NOT BE REPRODUCED, COPIED WHOLE OR IN PART WITHOUT WRITTEN AUTHORITY.

CLIENT	DATE	
	30/11/20	
TITLE	SCALE	
10.0x3.0m MOBILE CRIB ROOM - FLOOR PLAN	1:50	
DESIGN WIND LOAD	DRAWN	CHECKED
C2 (W50C)	BW	
DRAWING NUMBER	REVISION	SHEET SIZE
SQF-3778-01	A	A3